

Operation Log Function

1 What is the Operation Log Function?

The Operation Log function monitors and records the operation on the MICRO/I. This function enables you to check who performed each operation, when it was performed, what was performed, and where it was performed.

In addition, this function can help you analyze the causes of system errors or other types of problems from the record data.

2 When do you need this function?

If you have the following issues, the Operation Log function helps you, and gives you benefits.

1. You want to check whether MICRO/I have been cycled power or not.
2. You want to record what the operators have done on the MICRO/I.
3. You want to monitor when MICRO/I write a value to the PLC.

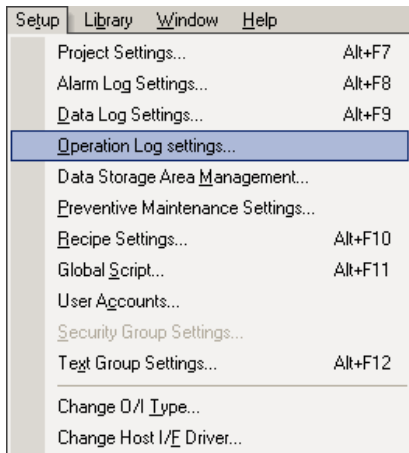


3 Configuration

The following steps explain you how to configure the operation log function.

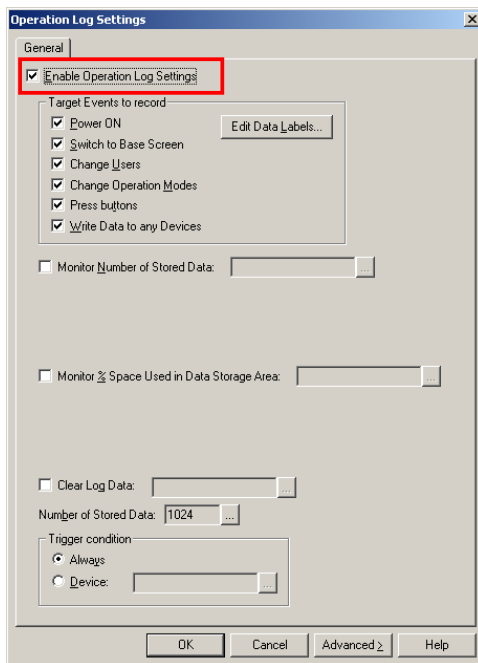
Step. 1 Configuration Screen

Go to “Setup” menu and select “Operation Log settings”.



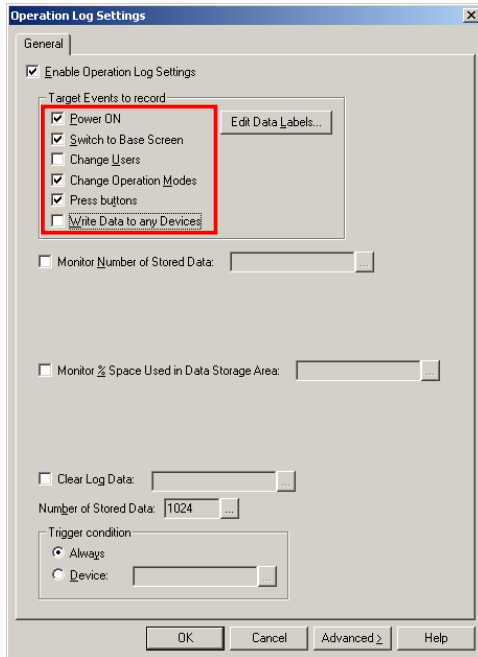
Step. 2 Enable the function

The “Operation Log Settings” dialog box allows you to configure the function. You need to check-on “Enable Operation Log Settings” check box to enable this function.



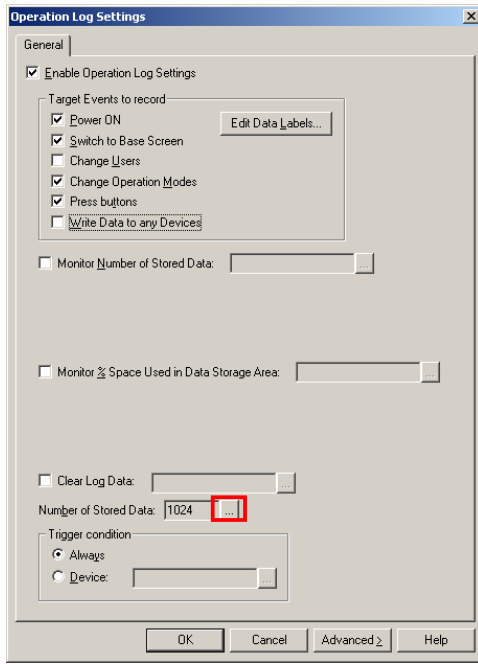
Step. 3 Select the target operations

You can choose the events which you want to record under “Target Events to record” group.

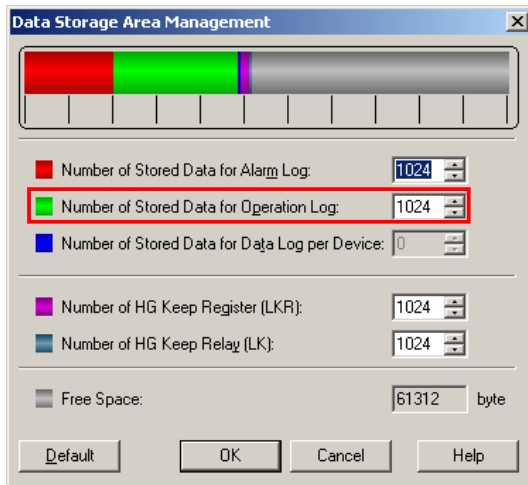


Step. 4 Check and change the Data Storage Area capacity

Check the value of “Number of Stored Data”. The value means how many data the MICRO/I can record. The default value is 1024, so the maximum operation log data will be 1024. If you want to change the value, click on the “...” button next on the number.



You can allocate the Data Storage Area to the functionalities using the following dialog box.



Step. 5 Optional function – monitoring the number of record data

If you want to know how many operations log data are stored into the internal memory, check-on “**Monitor Number of Stored Data**” check box and enter the [device address](#) which you want to store the number in.

Operation Log Settings

General

Enable Operation Log Settings

Target Events to record

Power ON Edit Data_Labels...

Switch to Base Screen

Change Users

Change Operation Modes

Press buttons

Write Data to any Devices

Monitor Number of Stored Data:

Report when Number of Stored Data has reached or exceeded Threshold

Threshold:

Report Device:

Monitor % Space Used in Data Storage Area:

Report when % Space Used has reached or exceeded Threshold

Threshold:

Report Device:

Clear Log Data:

Number of Stored Data:

Trigger condition

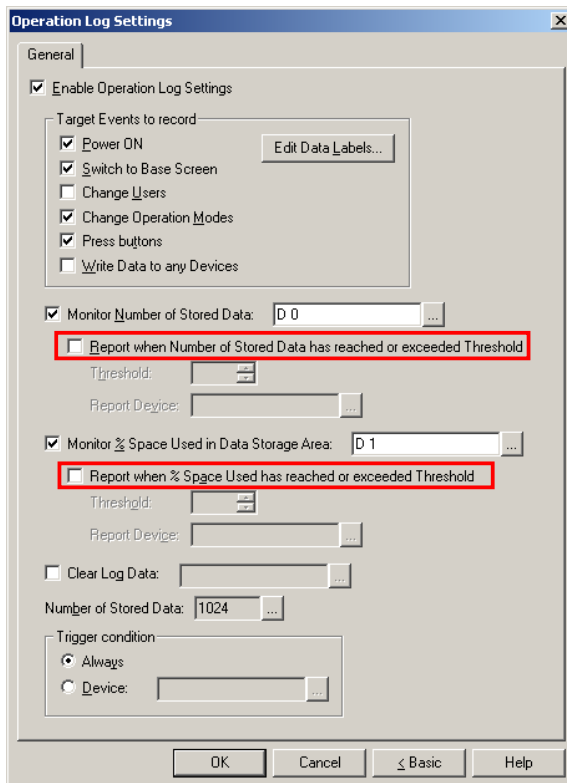
Always

Device:

OK Cancel < Basic Help

Notes: This is an advanced function. If you want to do something when the number of stored data reaches the value which you set, you have an optional setting. Check-on **“Report when Number of Stored Data has reached or exceeded Threshold”** check box and set the threshold value and the report device.

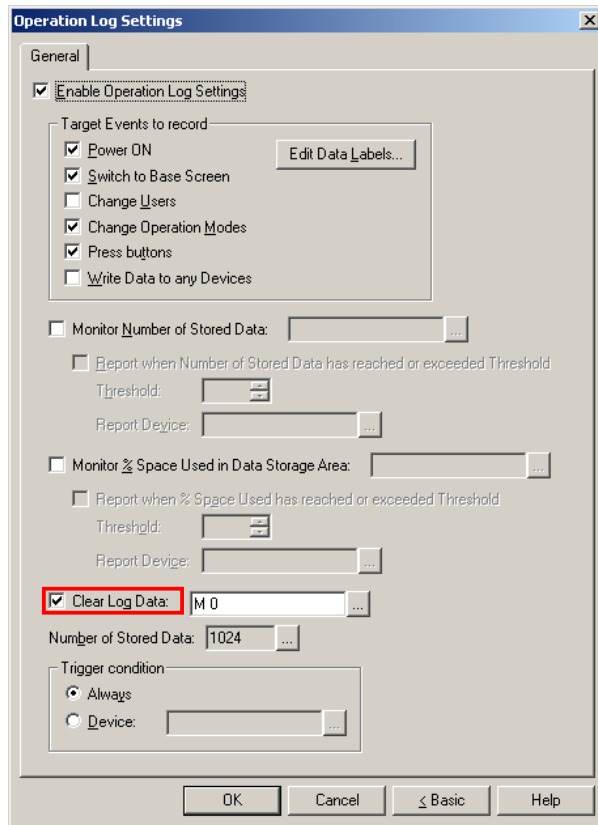
For example, if you want to show the alarm in order to upload the data when the operation log data reaches to 1000, check-on the check box, enter 1000 as the threshold value, and put whatever device address into the report device box. In this setting, when operation log data reaches to 1000, the report device address will be turned on.



Step. 6 Optional function – clear the operation log data

If you want to erase the operation log data in the internal memory of MICRO/I, check on “Clear Log Data” check box and enter the trigger device address.

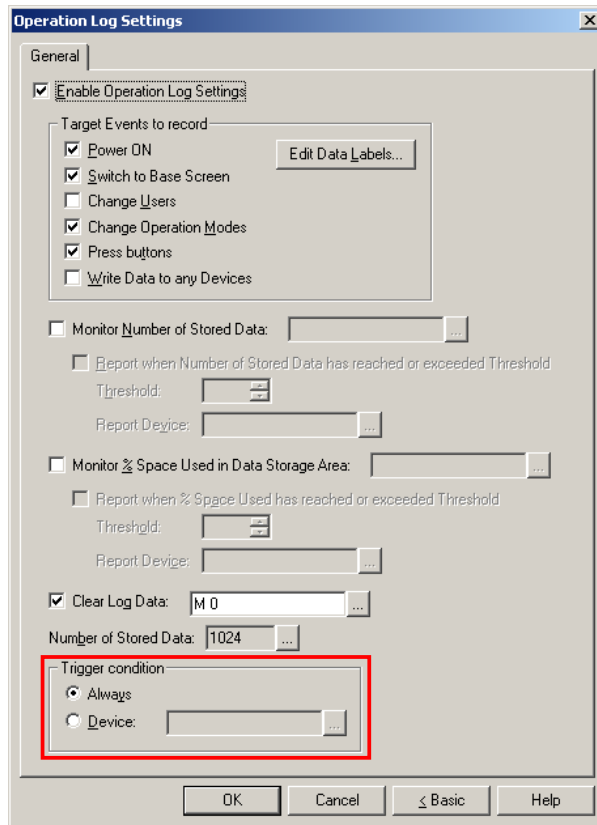
If you don't clear the data and it occupies the all data storage area, the oldest record will be overwritten by the new one.



Step. 7 Optional Function – Trigger Condition

If you want to record the operation log in the specific period, you can use the **trigger device** to turn on the function. If the **trigger device** value is OFF, the function will not work. In other words, if you want to record the operation log, you need to turn on the device state.

The default setting is “**Always**”, so the operation log function records the operation data whenever MICRO/I is running.



4 How to check the operation log data?

If you enable the function and download the project, the function will automatically run and record the operation which you selected. Then you can upload the operation log data from the MICRO/I using “Downloader” software. The “Downloader” software is included in the WindO/I-NV2 software package, or you can download the software from IDEC web site. The software is free software, so if an end-user wants to have the software, they can get the software without any payment.

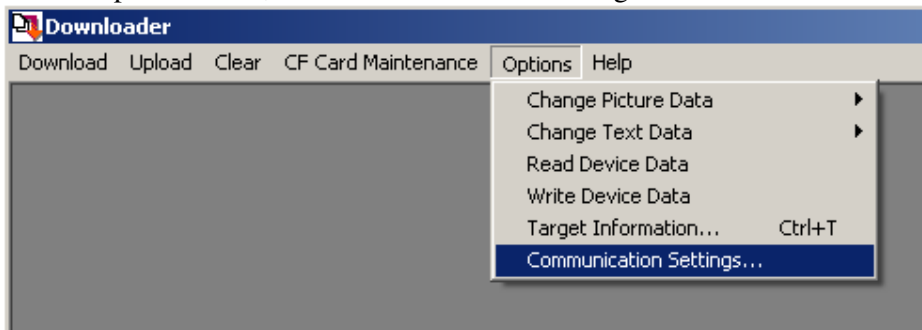
Step. 1 *How to upload the operation log data from MICRO/I?*

You can get the operation log data from MICRO/I using “Downloader” software.

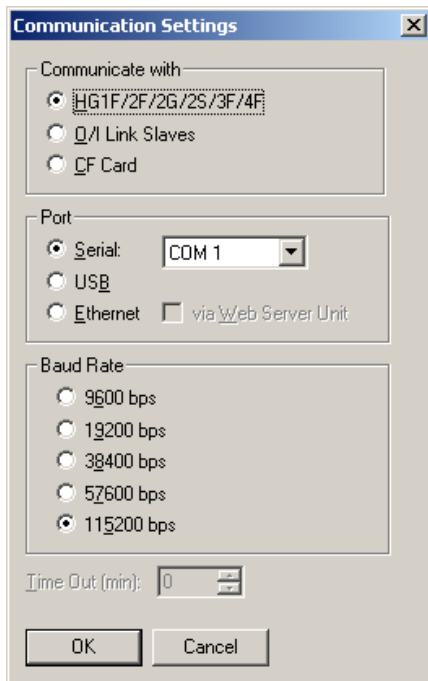
Note: You can not upload the data using WindO/I-NV2 software. The uploading function is only available in “Downloader”, and the WindO/I-NV2 software doesn't have this feature.

Step. 1.1 **Communication settings for MICRO/I**

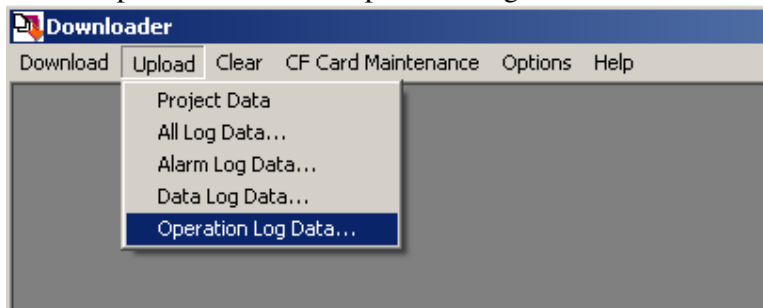
Go to “Option” menu, and “Communication Settings”.



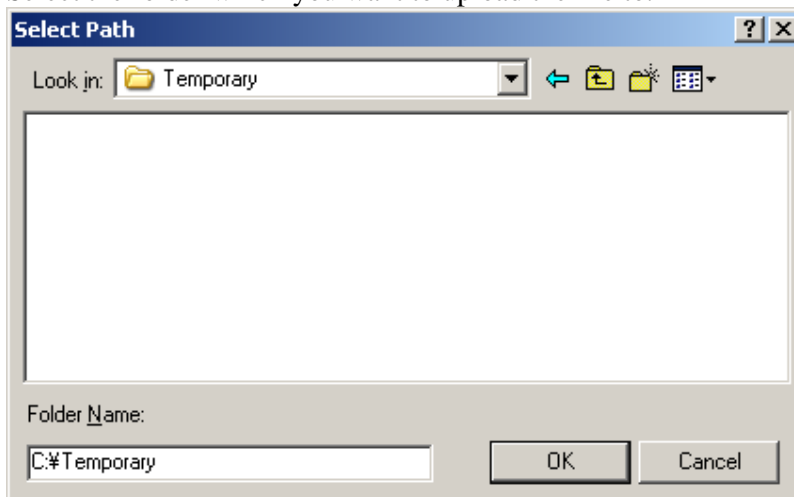
Check the communication settings. Serial Ports and Ethernet are available for HG2G. If you want to use the Ethernet communication, make sure the IP address and subnet mask were set in the MICRO/I.



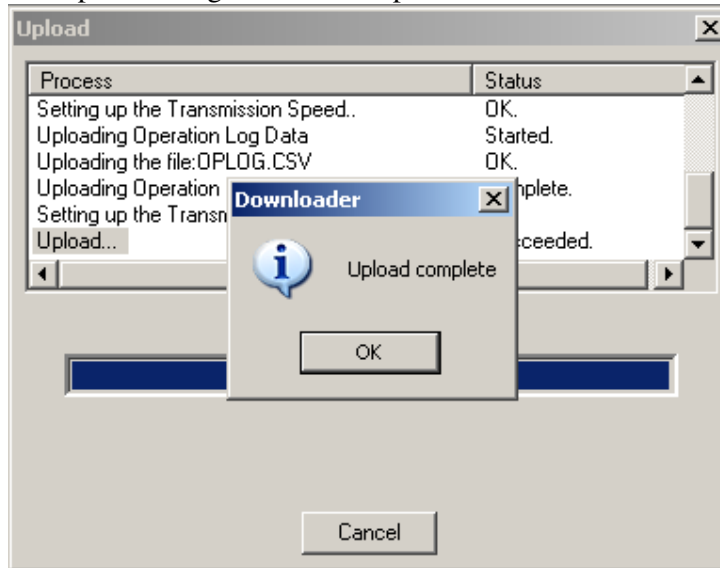
Step. 1.2 Upload the operation log data from MICRO/I
Go to "Upload" menu and "Operation Log Data".



Select the folder which you want to upload the file to.



The operation log data will be uploaded there.



5 Sample Program

Operation Log Settings

General

Enable Operation Log Settings

Target Events to record

- Power ON Edit Data Labels...
- Switch to Base Screen
- Change Users
- Change Operation Modes
- Press buttons
- Write Data to any Devices

Monitor Number of Stored Data: LDR 0 ...

Report when Number of Stored Data has reached or exceeded Threshold

Threshold: 100

Report Device: LM 0 ...

Monitor % Space Used in Data Storage Area: LDR 1 ...

Report when % Space Used has reached or exceeded Threshold

Threshold: 90

Report Device: LM 1 ...

Clear Log Data: LM 2 ...

Number of Stored Data: 1024 ...

Trigger condition

Always

Device: ...

OK Cancel < Basic Help

Operation Log Data Count 12345

[Report Device]

If the operation log data count reaches to 100,
the device will be turned on. OFF

The percentage of
occupied memory in storage area 12345

[Report Device]

If the percentage reaches to 10%,
the device will be turned on. OFF

Clear Operation Log Data Clear